



HP Labelled Media.

HP Tape Storage Media solutions for automated storage environments and data centres



With HP Custom Labelled data cartridges you'll always be able to find your data.

"...when I do have to restore data, I don't trust it to anyone but HP. HP media has proven time and time again to be solid, reliable and error free..."
Harold Kelley H.L.
Kelley Electric Company.

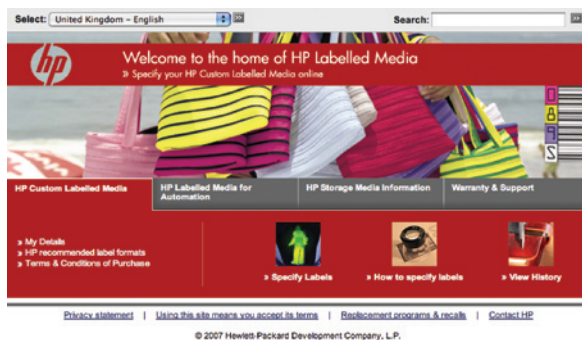
You can order Custom Labelled versions of all HP LTO Ultrium, DLT and SDLT media in convenient, 20-cartridge packs with a minimum order quantity of 100 cartridges.

Guaranteed precision online.

Precise ordering is vital to make sure you get the correct labels, in the correct sequence. And with our online label specification process it couldn't be simpler.

Go to HP's bar code label specification web site at www.hptapemedia.com and follow these five simple steps:

1. Select HP Custom Labelled Media tab.
2. Follow the instructions in the How to Specify Labels link.
3. Receive a unique Label Order ID by email.
4. Place order with HP Order Management, quoting the Label Order ID.
5. HP custom labelled media is delivered.



Label formats.

HP recommends the following formats for each type of technology:

| Drive Type | Data Cartridge | Cleaning Cartridge | Diagnostic Cartridge |
|---------------------|----------------|-----------------------|----------------------|
| DLT1 and VS80 | nnnnnnB | CLNnnnC or CLNnnn | DG nnnC |
| DLT (type IV media) | nnnnnn | CLNnnnS | DG nnnS |
| SDLT I | nnnnnnS | CLNnnnS | DG nnnS |
| SDLT II | nnnnnnS | CLNnnnS | DG nnnS |
| LTO-1 Ultrium | nnnnnnL1 | CLNvnnCU or CLNvnnL1* | DG vnnL1* |
| LTO-2 Ultrium | nnnnnnL2 | CLNvnnL1* | DG vnn L2* |
| LTO-3 Ultrium RW | nnnnnnL3 | CLNvnnL1* | DG vnn L3* |
| LTO-3 Ultrium WORM | nnnnnnLT | CLNvnnL1* | DG vnn LT* |
| LTO-4 Ultrium RW | nnnnnnL4 | CLNvnnL1* | DG vnn L4* |
| LTO-4 Ultrium WORM | nnnnnnLU | CLNvnnL1* | DG vnn LU* |

*For HP StorageWorks ESL libraries the LTO cleaning cartridges must be of the form CLNvnnL1 or CLNvnnL2. For HP SureStore 10/180 and 20/700 libraries the LTO cleaning cartridges must be of the form CLNvnnCU. Gen 1, Gen 2, Gen 3 and Gen 4 LTO products use the same cleaning cartridge. No diagnostic cartridges currently exist for LTO.

n = any alpha or numeric character (capital letter A through Z and numbers 0 through 9), except characters specifically reserved for other purposes such as CLN (cleaning) and DG (diagnostic). Any combination of unreserved characters can be used to identify the cartridges.

Why choose HP Custom Labelled cartridges?

- **Extra peace of mind costs you no more.** Custom Labelled media cost exactly the same as standard cartridges.
- **5 FREE cleaning cartridge labels** with every box of 20 HP Custom Labelled data cartridges.
- **Buy everything you need from one supplier.** Media and labels no longer need to be purchased from different suppliers.
- **No margin for error.** Transparent polyboxes make it easy to scan cartridges without first removing them from the polybox.
- **The right tape, instantly, every time.** Precisely engineered, precisely aligned. Custom Labelled media make certain your library can interpret barcodes accurately, every time.
- **Fast, simple and accurate.** IT staff don't have to spend hours peeling, sticking and attaching bar code labels to individual data cartridges. If an 800-slot tape library takes up to six hours to label by hand, imagine how much time and money you could save.

Fully customised label sequences for your libraries.

All HP Custom Labelled data cartridges can be ordered with a unique sequence for the bar code labels. As long as the sequence is allowed by the format, any sequence can be requested. Below is a guide to explain the key points of bar code label formats. For a comprehensive listing, please refer to HP's white paper on automation bar code labels at www.hptapemedia.com

Bar code labels for HP tape media use the Code 39 (sometimes referred to as Code 3-of-9) symbology, a widely used industrial standard.

The space character after DG is required for diagnostic cartridges.

Off-the-shelf availability for HP LTO Ultrium and HP Super DLTape II Non-Custom Labelled Data Cartridges.

- HP Non-Custom Labelled media are shipped in boxes of 20 data cartridges.
- Each box of 20 labelled cartridges is 'in sequence' (eg. From 1 to 20) for ease of use. Different boxes purchased at the same time may not be consecutive (eg. 1 to 20, 80 to 100).
- Each individual barcode sequence is pre-determined by HP and is guaranteed to be unique (no duplicate codes).
- Tested to extremes: both cartridge and label are exhaustively tested for maximum reliability in demanding automation environments.
- HP Non-Custom Labelled data cartridges are the same price as standard HP LTO Ultrium cartridges.
- Each box of 20 HP Non-Custom Labelled data cartridges contains 5 FREE cleaning cartridge labels.

HP labelled media is now available 'off the shelf' and delivered within a couple of days from any HP reseller. HP Non-Custom labelled media is supplied with a high quality, unique barcode label attached to each data cartridge and is ideal for customers who don't need to define the exact barcode sequence on each label.

You may not see the difference. But your tape library can!

The super-fast scanning equipment installed in tape libraries relies on high resolution, computer-generated bar codes to ensure the readability of the labels each and every time. Simply, if your autoloader can't read the label, it can't find the tape.

By anyone's standards, data loss is a serious matter. But if a WORM tape goes missing, it's a recipe for disaster. In the face of mounting, rigorous legislation, it only takes one misaligned label for you to be in breach of the law.

All HP bar code labels undergo extreme testing to ensure maximum reliability and performance. Many factors, most of which you would not be able to see, can affect the quality and performance of a bar code label. HP tests its bar code labels using software unique to Hewlett-Packard and rigorous tests evaluate the performance of labels in demanding, split-second automation environments. If they work perfectly in our labs, they'll work perfectly in your libraries.

Guaranteed to work perfectly, every time.

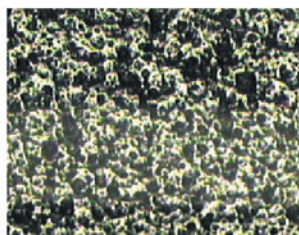
- HP automation barcode labels are applied professionally in a clean and controlled environment to prevent backup disruptions.
- HP automation barcode labels have been specifically tested and approved for trouble-free use on HP StorageWorks tape autoloaders and libraries. Guaranteed not to peel, distort, reflect or fade.

(20X magnification)



High quality engineered label from HP with sharp black & white differentiation.

(20X magnification)



Label from an alternative media supplier showing poor differentiation between black & white segments.

Custom Labelled media, Non-Custom Labelled media or label packs. HP makes it easy to keep your data in order.

HP Custom Labelled Data Cartridges

- HP Custom Labelled Data Cartridges are available for all HP LTO Ultrium, DLT and Super DLTape media.
- Order HP Custom Labelled media in convenient 20-cartridge packs.
- Minimum order quantity must be 100 cartridges.
- Five FREE cleaning cartridge labels with every 20 Custom Labelled Data Cartridges.
- Label sequences specified by the customer using the online specification tool at www.hptapemedia.com.
- Delivery time 10 – 15 working days.
- HP Custom Labelled Data Cartridges are the same price as standard HP data cartridges.



- Each box of 20 Non-Custom Labelled cartridges is in a consecutive sequence eg. 1 to 20.
- Multiple boxes purchased at the same time will probably not have connected label sequences.
- Delivery time 2-3 days.
- HP LTO Ultrium Non-Custom Labelled Data Cartridges are the same price as standard HP data cartridges.

HP Non-Custom Labelled Data Cartridges

- HP Non-Custom Labelled Data Cartridges are available for all HP LTO Ultrium 1,2, 3 and 4 and HP Super DLTape II media.
- Purchase 'off-the-shelf' HP Non-Custom labelled media in boxes of 20.
- Minimum order quantity 20.
- Five FREE cleaning cartridge labels with every 20 Non-Custom Labelled Data Cartridges.
- Barcode sequences pre-determined by HP.

HP Automation Barcode Labels Packs

- For customers who still prefer to put the labels on themselves, pre-sequenced packs of HP Automation Barcode Labels will help to file tapes in perfect order. Just take extra special care to apply them accurately.
- Available for all LTO Ultrium, SDLT, DLT and AIT media.
- 100 data cartridge labels and 10 cleaning cartridge labels.
- No two packs of labels are ever the same and all the labels in the pack are consecutive.
- The sequence will only repeat when all possible combinations are exhausted. For Ultrium this will take over 5 million labels to begin at AA0001L1 again and customers can feel secure that they will receive a truly unique label sequence!

Ordering Information

| Product | Must be ordered from HP in multiples of | Compressed capacity* | Part number |
|---|---|----------------------|-------------|
| HP LTO-1 Ultrium 200 GB Custom Labelled Data Cartridge | 5** | 200 GB | HP C7971AL |
| HP LTO-2 Ultrium 400 GB Custom Labelled Data Cartridge | 5** | 400 GB | HP C7972AL |
| HP LTO-3 Ultrium 800 GB RW Custom Labelled Data Cartridge | 5** | 800 GB | HP C7973AL |
| HP LTO-3 Ultrium 800 GB WORM Custom Labelled Data Cartridge | 5** | 800 GB | HP C7973WL |
| HP LTO-4 Ultrium 1.6 TB RW Custom Labelled Data Cartridge | 5** | 1.6 TB | HP C7974AL |
| HP LTO-4 Ultrium 1.6 TB WORM Custom Labelled Data Cartridge | 5** | 1.6 TB | HP C7974WL |
| HP DLTape IV Custom Labelled Data Cartridge | 5** | 40 GB/80 GB | HP C5141FL |
| HP Super DLTape I Custom Labelled Data Cartridge | 5** | 220 GB/320 GB | HP C7980AL |
| HP Super DLTape II 600 GB Custom Labelled Data Cartridge | 5** | 600 GB | HP Q2020AL |
| HP LTO-1 Ultrium 200 GB Non-Custom Labelled Data Cartridge† | 1 | 200 GB | HP C7971AN |
| HP LTO-2 Ultrium 400 GB Non-Custom Labelled Data Cartridge† | 1 | 400 GB | HP C7972AN |
| HP LTO-3 Ultrium 800 GB Non-Custom Labelled Data Cartridge† | 1 | 800 GB | HP C7973AN |
| HP LTO-4 Ultrium 1.6 TB RW Non-Custom Labelled Data Cartridge | 1 | 1.6 TB | HP C7974AN |
| HP Super DLTape II 600 GB Non-Custom Labelled Data Cartridge | 1 | 600 GB | HP Q2020AN |
| HP LTO-1 Ultrium Automation Bar Code Labels | 1 | n/a | HP Q2001A |
| HP LTO-2 Ultrium Automation Bar Code Labels | 1 | n/a | HP Q2002A |
| HP LTO-3 Ultrium RW Automation Bar Code Labels | 1 | n/a | HP Q2007A |
| HP LTO-4 Ultrium WORM Automation Bar Code Labels | 1 | n/a | HP Q2008A |
| HP DLTape IV Automation Bar Code Labels | 1 | n/a | HP Q2004A |
| HP Super DLTape Automation Bar Code Labels | 1 | n/a | HP Q2003A |
| HP Super DLTape II Automation Bar Code Labels | 1 | n/a | HP Q2006A |
| HP AIT Automation Bar Code Labels | 1 | n/a | HP Q2005A |

** Minimum order quantity 5 units (5 x 20 = 100 cartridges) †(box of 20 cartridges)

To help clear your mind visit: www.hptapemedia.com

